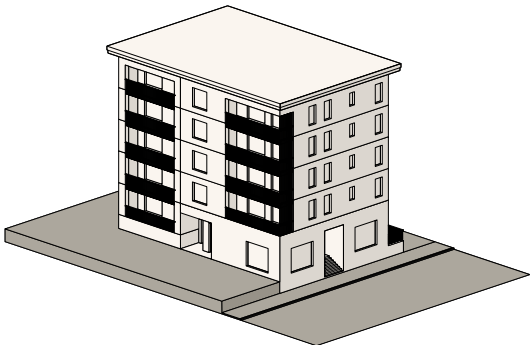
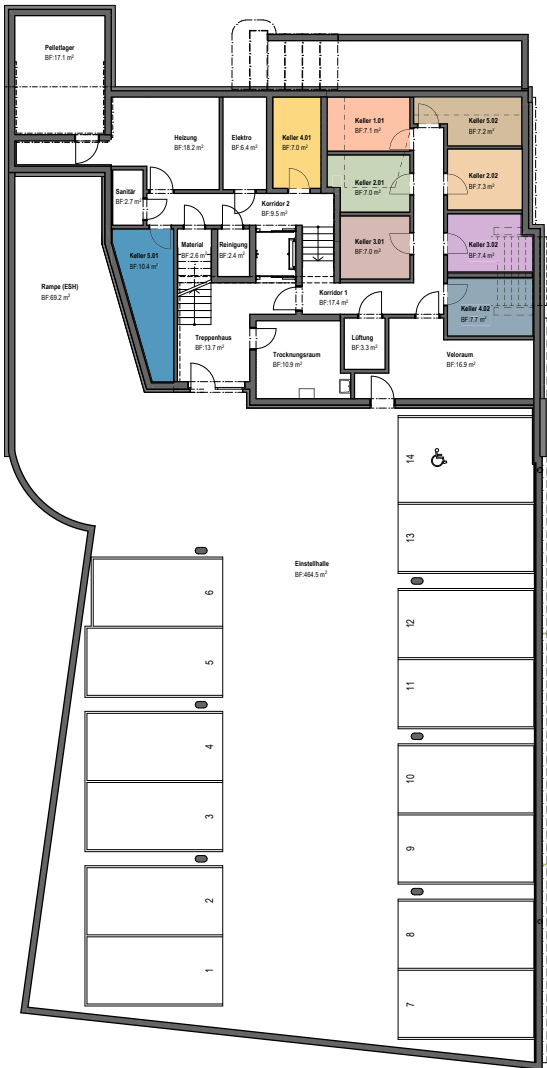




# TIEFGARAGE KELLER



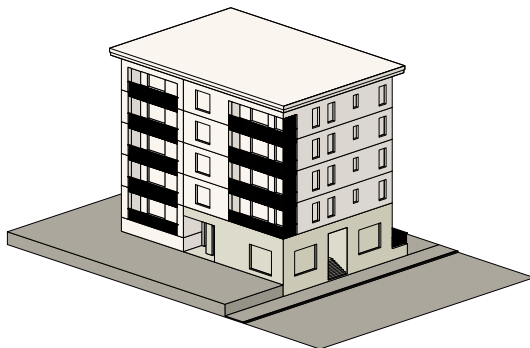
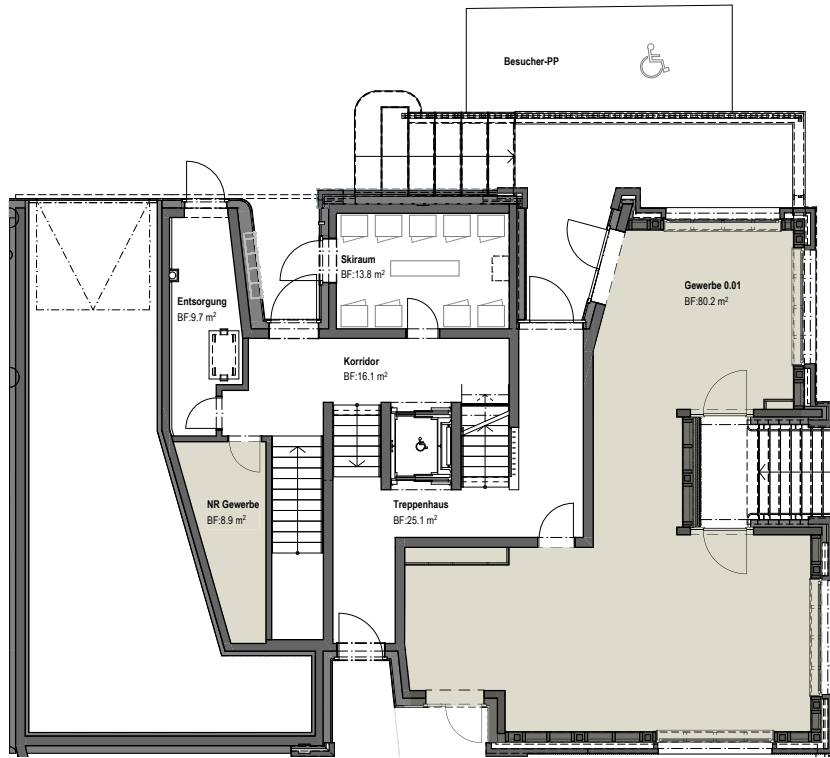
MASSTAB 1:200

0m | 1m | 2m | 3m | 4m



# GEWERBE

Ihr Wohntraum in den Alpen



Whg.-Nr.	Gewerbe
Etage	EG
Zimmer	1
Fläche	80.2 m <sup>2</sup>
NR Gewerbe	8.9 m <sup>2</sup>
Aussenfläche	86.8 m <sup>2</sup>



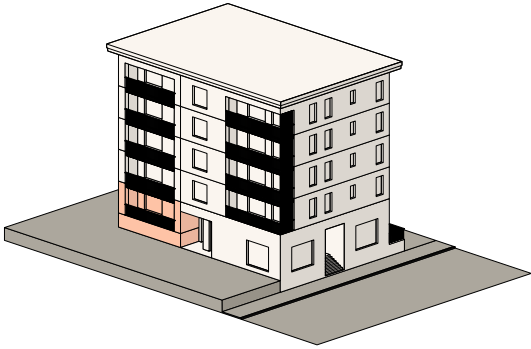
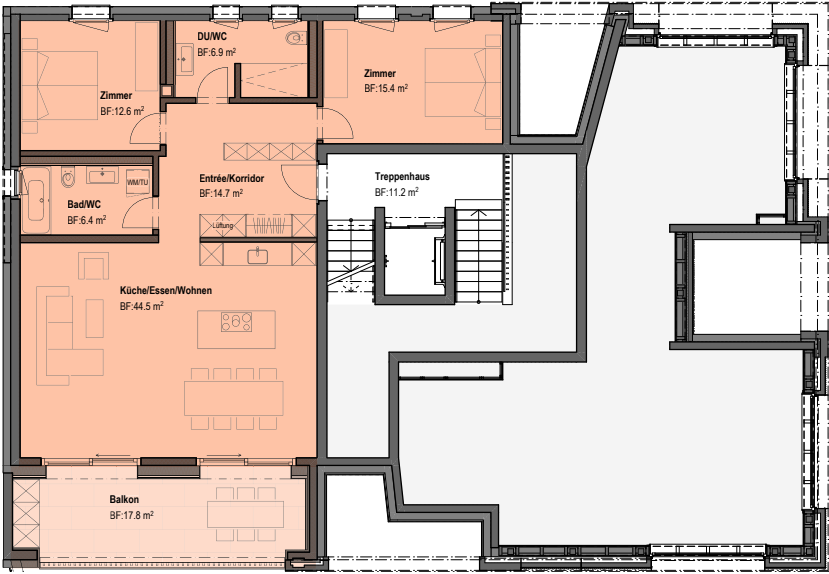
MASSTAB 1:200





# WOHNUNG WHG 1.01

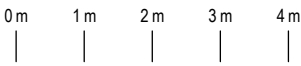
Ihr Wohnraum in den Alpen



Whg.-Nr.	WHG 1.01
Etage	ZG
Zimmer	3.5
Wohnfläche	101.2 m <sup>2</sup>
Balkon	17.8 m <sup>2</sup>



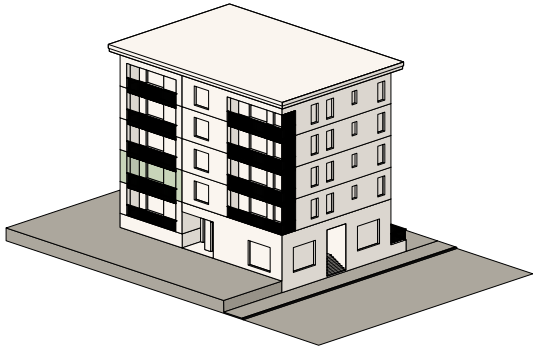
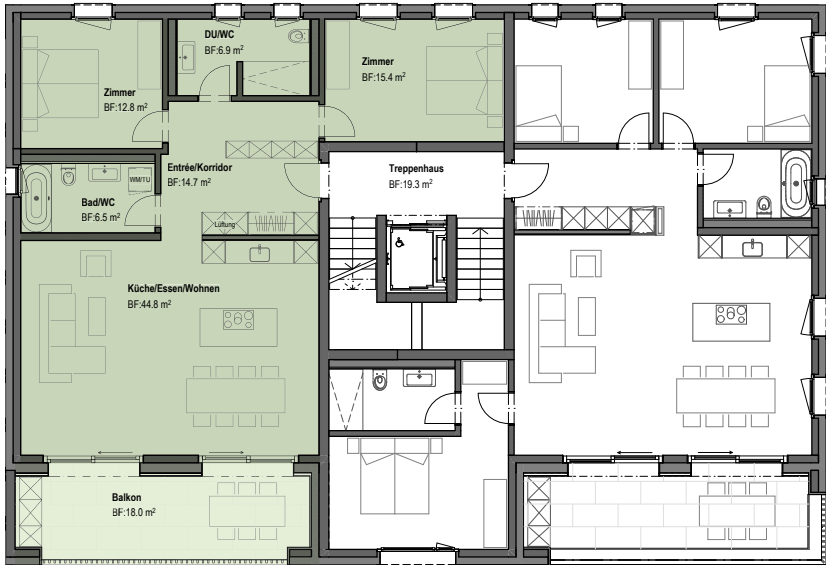
MASSTAB 1:200





# WOHNUNG WHG 2.01

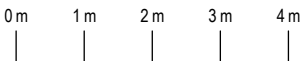
Ihr Wohnraum in den Alpen



Whg.-Nr.	WHG 2.01
Etage	2. OG
Zimmer	3.5
Wohnfläche	101.7 m <sup>2</sup>
Balkon	18.0 m <sup>2</sup>



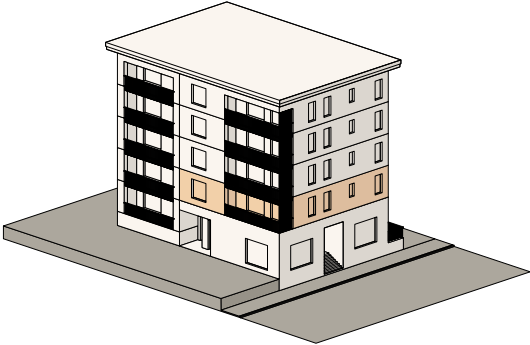
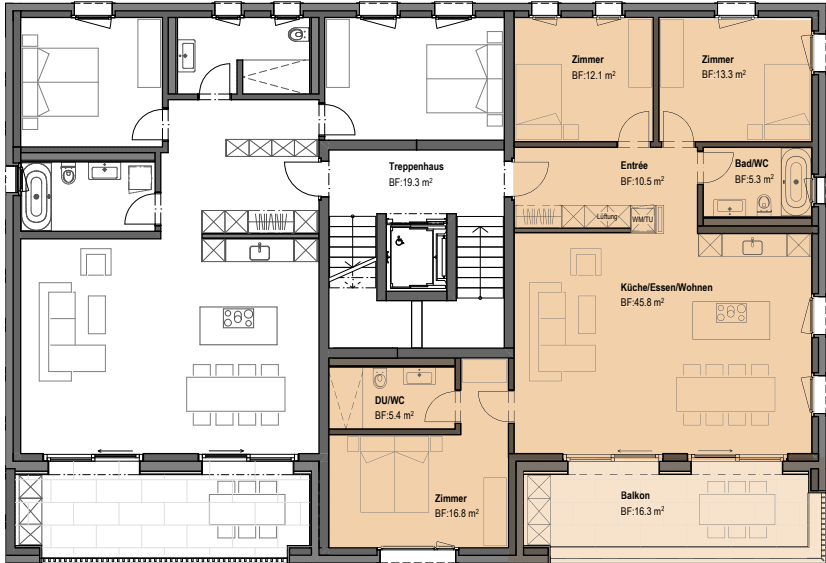
MASSTAB 1:200





# WOHNUNG WHG 2.02

Ihr Wohnraum in den Alpen



Whg.-Nr.	WHG 2.02
Etage	2. OG
Zimmer	4.5
Wohnfläche	110.0 m <sup>2</sup>
Balkon	16.3 m <sup>2</sup>

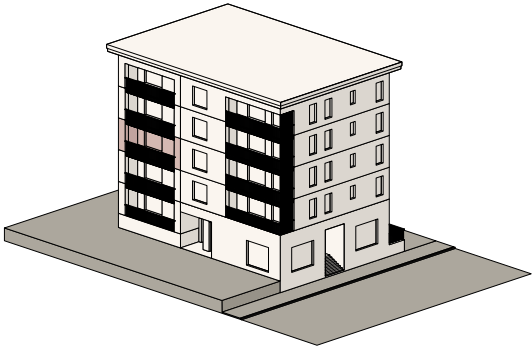
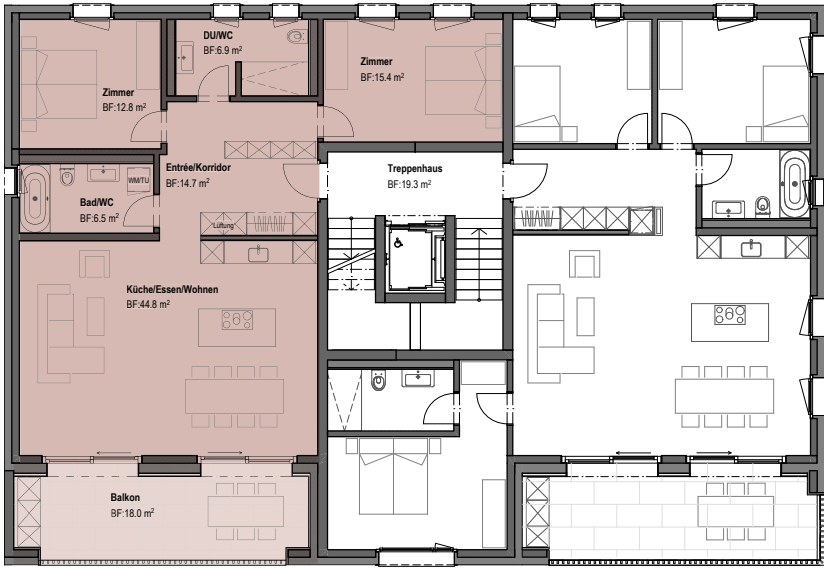


MASSTAB 1:200    0m    1m    2m    3m    4m



# WOHNUNG WHG 3.01

Ihr Wohnraum in den Alpen



Whg.-Nr.	WHG 3.01
Etage	3. OG
Zimmer	3.5
Wohnfläche	101.7 m <sup>2</sup>
Balkon	18.0 m <sup>2</sup>

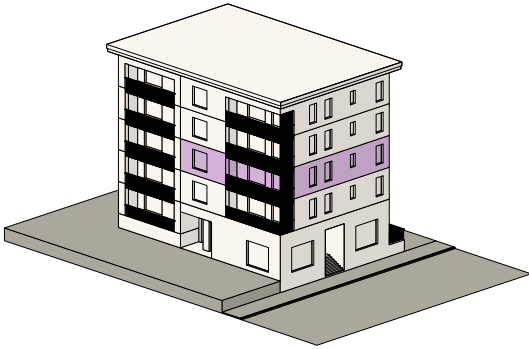


MASSTAB 1:200 | 0m | 1m | 2m | 3m | 4m



# WOHNUNG WHG 3.02

Ihr Wohnraum in den Alpen



Whg.-Nr.	WHG 3.02
Etage	3. OG
Zimmer	4.5
Wohnfläche	110.0 m <sup>2</sup>
Balkon	18.0 m <sup>2</sup>

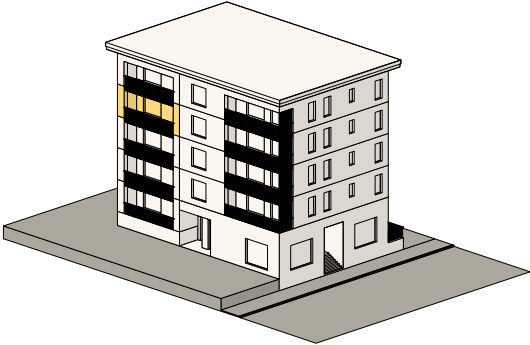
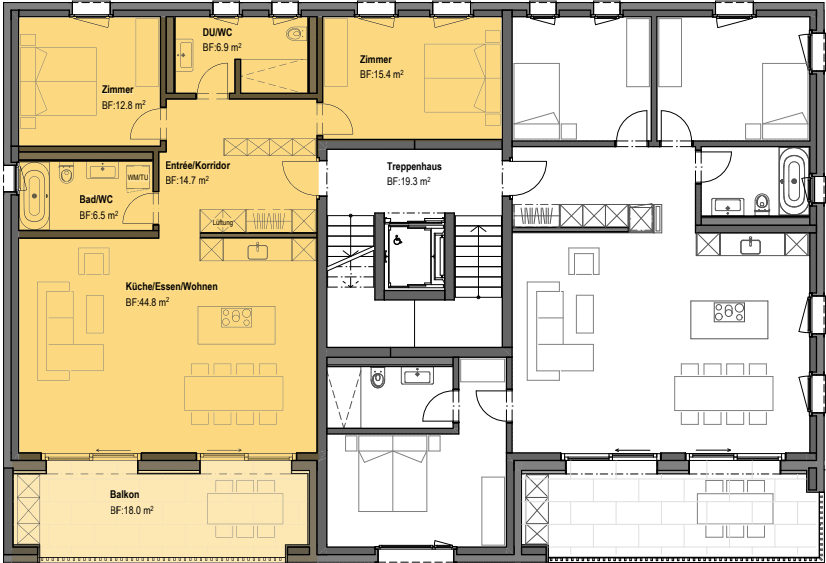


MASSTAB 1:200 | 0m | 1m | 2m | 3m | 4m



# WOHNUNG WHG 4.01

Ihr Wohnraum in den Alpen



Whg.-Nr.	WHG 4.01
Etage	4. OG
Zimmer	3.5
Wohnfläche	101.7 m <sup>2</sup>
Balkon	18.0 m <sup>2</sup>

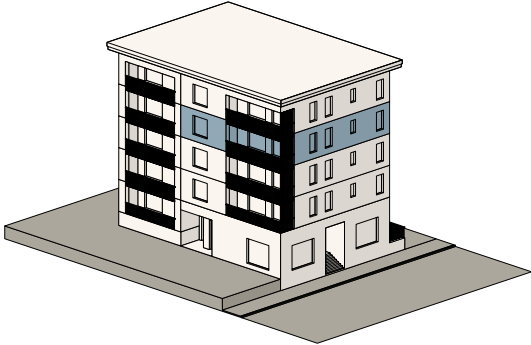
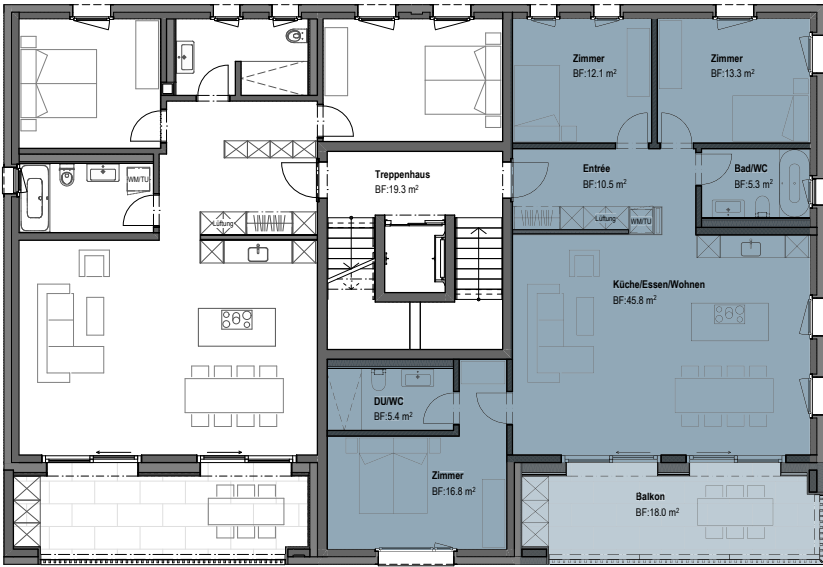


MASSTAB 1:200 | 0m | 1m | 2m | 3m | 4m



# WOHNUNG WHG 4.02

Ihr Wohnraum in den Alpen



Whg.-Nr.	WHG 4.02
Etage	4. OG
Zimmer	4.5
Wohnfläche	110.0 m <sup>2</sup>
Balkon	18.0 m <sup>2</sup>

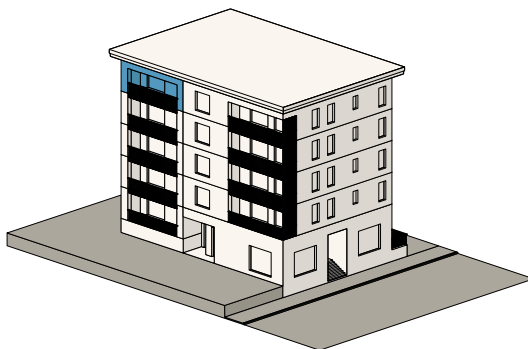
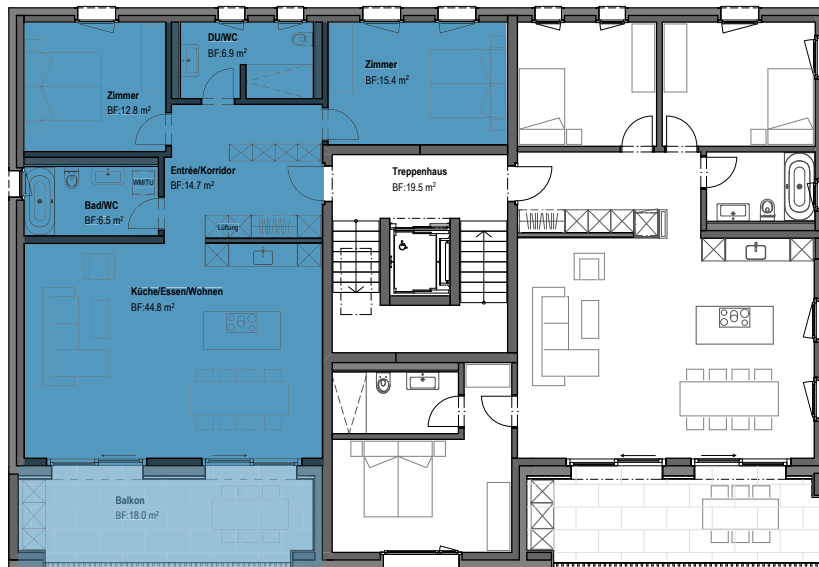


MASSTAB 1:200 | 0m | 1m | 2m | 3m | 4m



# WOHNUNG WHG 5.01

Ihr Wohnraum in den Alpen



Whg.-Nr. WHG 5.01

Etage ATTIKA

Zimmer 3.5

Wohnfläche 101.7 m<sup>2</sup>

Balkon 18.0 m<sup>2</sup>



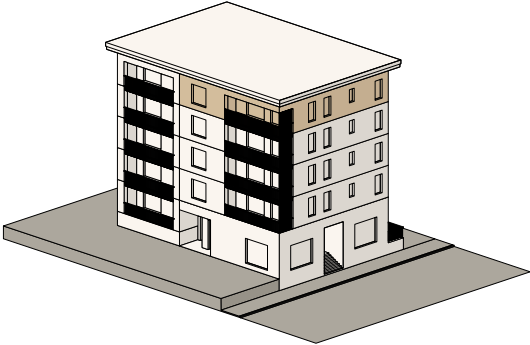
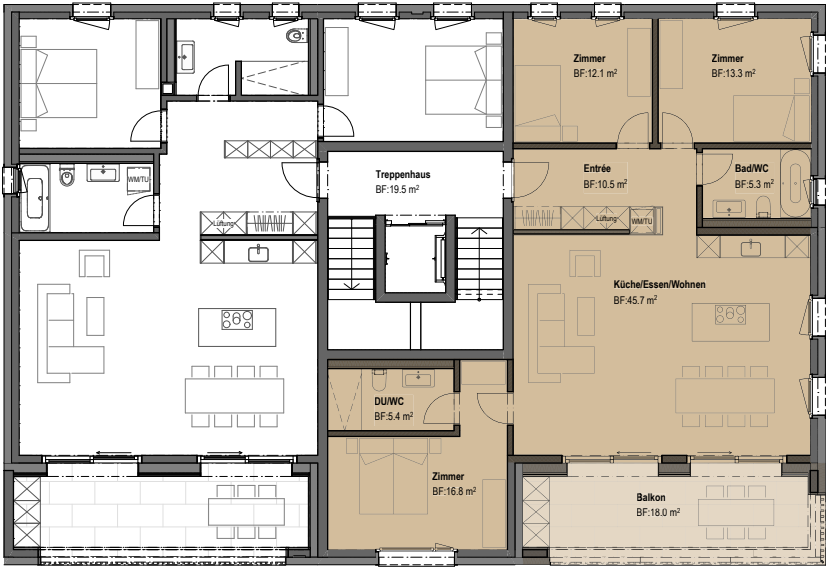
MASSTAB 1:200

0m 1m 2m 3m 4m



# WOHNUNG WHG 5.02

Ihr Wohnraum in den Alpen



Whg.-Nr.	WHG 5.02
Etage	ATTIKA
Zimmer	4.5
Wohnfläche	110.0 m <sup>2</sup>
Balkon	18.0 m <sup>2</sup>



MASSTAB 1:200    0m    1m    2m    3m    4m